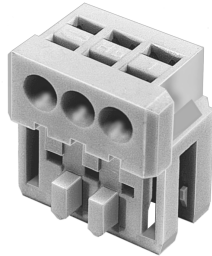
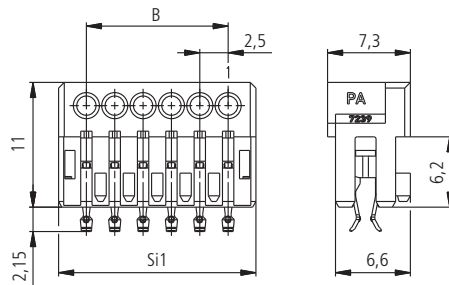


Serie MF 7239 für Einzelleiter zum direkten Stecken, mit PCB-Verrastung ohne Kammverluster als Busverbinder

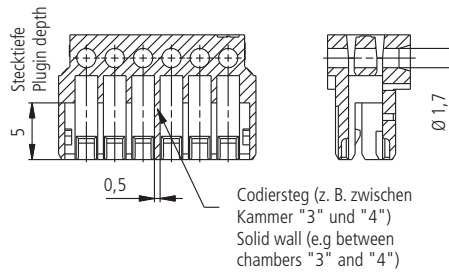
Series MF 7239 for single wire for direct connections, with PCB locking without loss of contact as daisy chain connector



Darstellung vormontiert
Designation pre-assembled



Darstellung ohne Kontakte
Designation without contacts



Ø 1,6 mm - alternativ
Rastfenster $1,6^{+0,1} \times 1,6^{+0,1}$
Ø 1,6 mm - alternativ
lock window $1,6^{+0,1} \times 1,6^{+0,1}$

