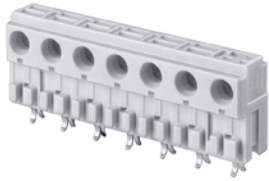


Vorzugstypen ECO-TRONIC pro

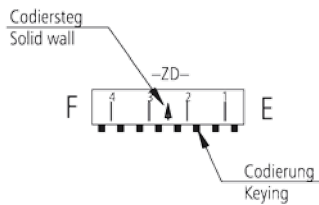
Gehäuserohlinge der Serie MF 7260

Preferential types ECO-TRONIC pro

Housing slug series MF 7260



Ansicht Codierung in Steckrichtung
View coding in plug-in direction

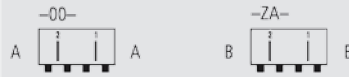


A - G = Außenwand / Side wall

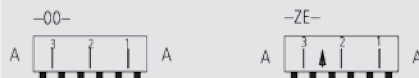
Gehäuse mit den dargestellten Codierstegen und Außenwänden sind bevorzugt einzusetzen. Codierungen können frei gewählt werden.

Housings with shown solid ribs and side walls should be used preferably. Codings can be chosen freely.

2polig / 2-way



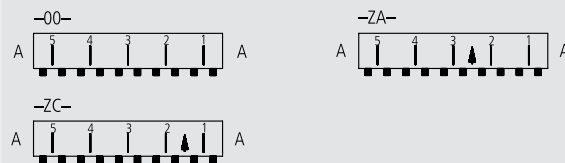
3polig / 3-way



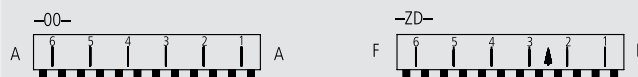
4polig / 4-way



5polig / 5-way



6polig / 6-way



7polig / 7-way



9polig / 9-way



10polig / 10-way

