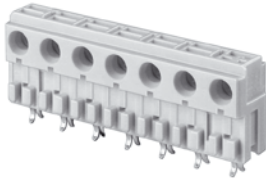


## Vorzugstypen ECO-TRONIC pro

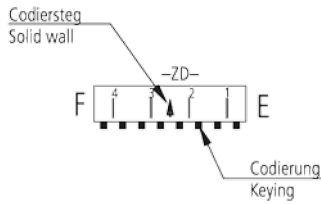
Gehäuserohlinge der Serie MF 7262

## Preferential types ECO-TRONIC pro

Housing slug series MF 7262



Ansicht Codierung in Steckrichtung  
View coding in plug-in direction

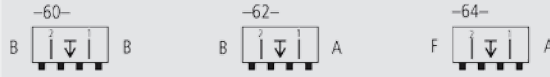


A - G = Außenwand / Side wall

Gehäuse mit den dargestellten Codierstegen, Außenwänden und Rasthaken sind bevorzugt einzusetzen. Codierungen können frei gewählt werden.

Housings with shown solid ribs, side walls and locking hooks should be used preferably. Codings can be chosen freely.

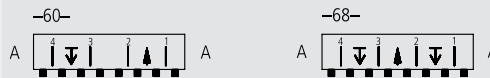
### 2polig / 2-way



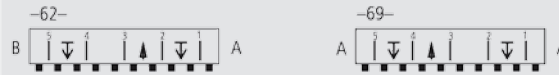
### 3polig / 3-way



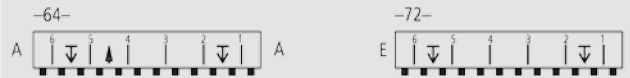
### 4polig / 4-way



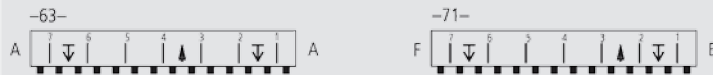
### 5polig / 5-way



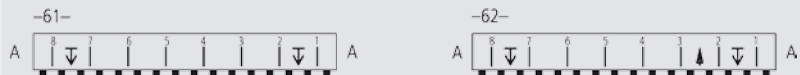
### 6polig / 6-way



### 7polig / 7-way



### 8polig / 8-way



### 9polig / 9-way



### 10polig / 10-way

